

Talyllyn Railway - Disability Access Statement

The Talyllyn Railway welcomes people of all abilities to enjoy our facilities and we aim to be as accessible as possible. This access statement does not contain personal opinions as to the suitability for those with differing abilities but aims to accurately describe the facilities and services we offer.

Please contact our booking office if you have any questions that this statement doesn't address or have any concerns about your visit.

The Talyllyn Railway operates services from seven stations. Passengers with disabilities, and carers accompanying them are entitled to a 20% discount. Disabled children may travel free of charge.

There are accessible toilets at Tywyn Wharf and Abergynolwyn stations, and lightweight portable ramps for accessing the trains (as used by Network Rail - max weight 300kg) at Tywyn Wharf, Rhydyronen, Dolgoch, Abergynolwyn and Nant Gwernol stations.

Trains

Most passenger trains (except Vintage and Victorian services) have a wheelchair accessible carriage, each capable of holding a maximum of six wheelchairs (area available for wheelchairs is 1300mm x 3300mm).



Most of our standard carriages have a footboard step with two steps up into the carriage of around 200mm each. However, some of our historic vehicles differ such as the original Talyllyn Railway carriages which have a low footboard step and narrow doorways, and the First Class Glyn Valley Tramway carriages which do not have a footboard step. There are two steps of 200mm each into a standard bogie carriage from the platform. A lightweight folding wheelchair ramp is available (max weight 300kg).

Some carriages towards the front of a departing train may be standing on the level crossing where there is no raised platform, in which case the first step up is approximately 500mm - however portable steps are available.

Tywyn Wharf Station

This is the main terminus of the railway.

The railway's main car park is located approximately
75yds from the station in Ffordd Neifion (Neptune Road).



The large car park has a tarmac and gravel surface and the charge for parking is £1 for 4 hours.



The route from the car park to the station is along Ffordd Neifion, up a slope to the bridge crossing the mainline railway.

There is a dropped kerb giving pavement access 15yds from the car park.

There are also dropped kerbs with tactile paving on both sides of the road at the summit of the bridge and outside the station entrance.



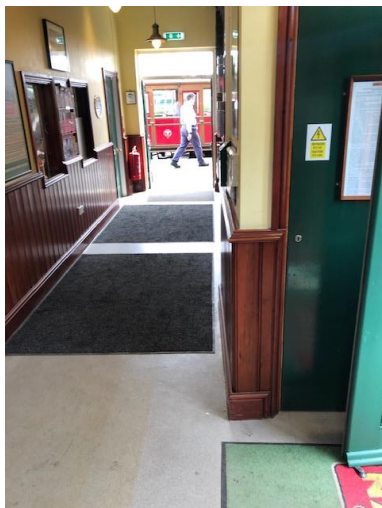
A wheelchair is available for use within the station. It is possible for passengers to be dropped off at the entrance to the station. Please speak to a member of staff when you reach the white gate as access in this area is restricted.



From the pavement, there is a zig-zag ramped access path (note that top part of the path is steeper than the rest) with handrails or steps with tactile treads, yellow highlighted nosings and handrails down to the Booking Hall which has double entrance doors, providing a total opening width of 1600mm.



This station is staffed daily. The booking office counter level is 940mm above the floor level, and two open windows are provided. A large print information leaflet is available on request from the booking clerk. From the Booking Hall, a double doorway provides a total opening width of 1200mm directly onto the platform.



Also from the Booking Hall two doorways, one 750mm wide and one 800mm wide, lead into the Shop. Gangways through the shop have a minimum clearance of 750mm. There is a door from the shop which is 720mm wide which leads directly onto the platform.



Public Transport access: Tywyn main line station is situated 300yds from the Tallyllyn Railway's station, along Station Road. A level access route with dropped kerbs is available. Main line trains operated by Arriva Trains Wales run between Shrewsbury/Machynlleth and Pwllheli. The nearest bus stop is in Brynhyfryd Road, 30yds from Wharf station.

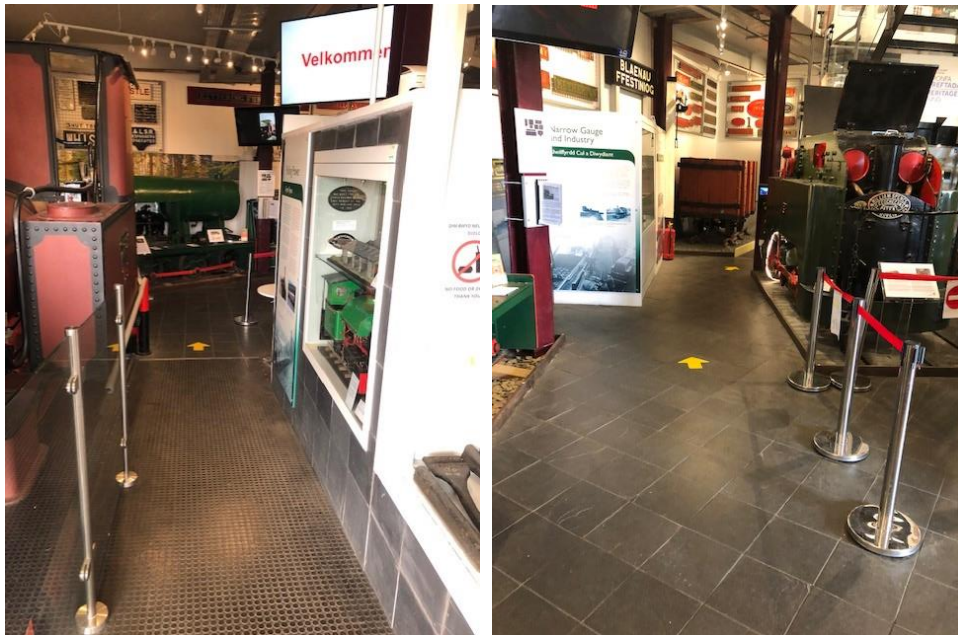
King's Licensed Café is equipped with chairs that may be moved to accommodate wheelchair users. Orders should be placed at the till and food is brought to your table.



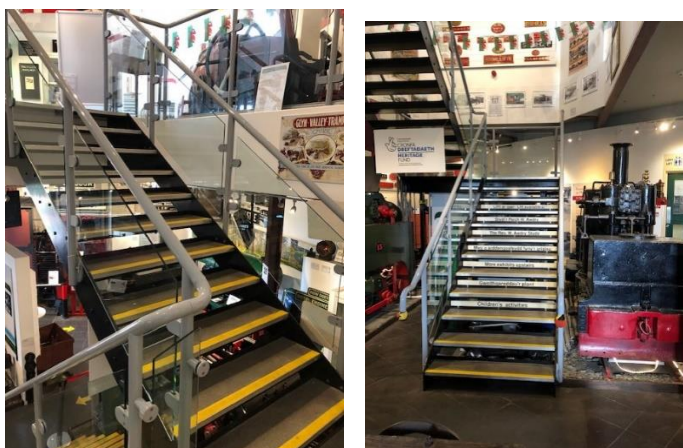
There is also a bar which has a lowered counter. Please ask café staff if you require any assistance – they will be delighted to help. There are two exits from the café onto the station platform. One is through a narrow door 600mm wide (a second door can be opened to make a width of 1200mm), and there is a wider exit at the far end of the café through a door 800mm wide (a second door can be opened to make a width of 1600mm). Picnic tables with bench seating are available on the platform.



The Narrow Gauge Railway Museum is accessed from the platform through an 800mm wide door which opens outwards with a 4.4m long ramp down to internal floor level.



The museum may also be accessed from King's Licensed Café on the ground floor of the station via the lift lobby (two 750mm wide doors). All gangways within the museum have a minimum width of 800mm with the exception of the ramped access to the footplate of the 'William Findlay' locomotive. This has a 600mm wide ramp, narrowing to 500mm and the entrance to the cab which is 400mm wide. However, a CCTV display behind the locomotive relays live images of the locomotive footplate for all visitors to enjoy. Some interpretive display wording is in large print and all is bilingual Welsh/English with QR codes.



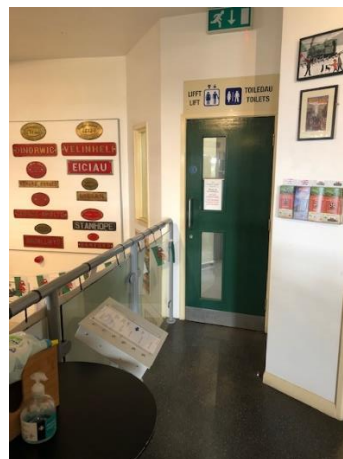
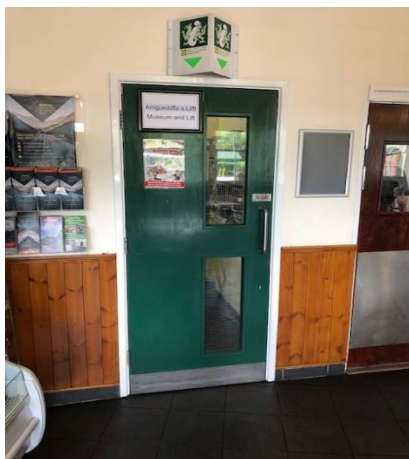
From the ground floor, a wide flight of 23 steps with yellow highlighted nosings leads to the first floor which contains further displays

From the ground floor, wheelchair users should take the ramped access to the lift (one 750mm wide door to go through to the lift lobby, from which a second door gives access to the café)



The passenger lift has an entrance 800mm wide and internal dimensions of 900mm wide x 1200mm deep. Note that some larger mobility scooters may not fit into the lift.

The buttons are equipped for Braille users and it is a speaking lift. From the first floor exit to the lift, a 750mm wide door leads into the upper Museum area. The upper Museum area also has an exit with level access to the balcony giving a view of the station area. This is accessed through double doors each 500mm wide. Please ask the museum attendant if you require any assistance opening the doors.





Toilets for visitors to the Museum may also be found on the first floor near the lift, including an accessible toilet.

This is accessed through a sprung door 800mm wide, and is fully equipped with grab rails, emergency pull cord, palm operated flush, low level basin, lever operated tap and automatic hand dryer.

The upper Museum area also has an exit with level access to the balcony giving a view of the station area. This is accessed through double doors each 500mm wide.

Also located on the first floor is the John Slater Education Room which is used for meetings/exhibitions etc, and which is fitted with an induction loop.

Outside, the platform surface is tarmac.



Further toilet facilities are available on the platform and there is one step up into both Ladies and Gents toilets. An accessible toilet with a usable opening door of 800mm is available. This is equipped with grab rails, a lever tap and baby changing facilities. Dimensions of the usable area are 1100mm x 1900mm.

Nearest Public Access Defibrillator – Outside toilets on station platform

Pendre Station

Public Transport access: Bus services stop outside Holgates Ice Cream Shop, some 300yds from Pendre station.

Parking is only available in the roads around the station. Access to the platform is through an unsprung gate with an opening of 1000mm.



The platform surface is rough but firm earth and gravel, with slate platform edge stones which are slightly raised above the platform surface by a maximum of 30mm. There is a step of 50mm into the covered waiting area which contains limited seating. This station is unstaffed.



Nearest Defibrillator – In Pendre Mess Room (accessible only when staff/volunteers are present)

Rhydyronen Station

Public Transport access: Bus stop at Y Groesffordd, Brynchrug, 0.6 mile away

No parking is available at this station. The main entrance from the tarmac lane is across a rough, grassy area, and through an 8ft wide wooden gate. A wide, level, grassy path leads 30yds to the platform, which is composed of compacted earth and gravel with slate platform edge stones.



There is level access into the platform waiting shelter which contains a long bench seat. Further bench seats are located on the platform. This station is staffed infrequently, and only when the peak train service is in operation.



There are two steps of 200mm each into a standard bogie carriage from the platform. A lightweight folding wheelchair ramp is available (max weight 300kg).

Nearest Public Access Defibrillator – Across road at Tynllwyn Caravan Park

Brynglas Station

Public Transport access: None available.

No parking is available at this station, which is unstaffed.

The platform is adjacent to a level crossing and is approached by a rough but firm gravel access. The platform is composed of compacted earth and gravel with slate edge stones. The platform height varies considerably.



There are two steps of 200mm each into a standard bogie carriage from the highest part of the platform. There is level access into the waiting shelter. Two bench seats are located on the platform, with a narrow bench seat within the waiting shelter. This is also the location for the railway's Memorial Garden which is approached from the lane along a short grassy path and through a latched wooden gate. A bench seat is provided within the garden, some distance from the entrance, across rough grass.

Dolgoch Station

Public Transport access: There is a bus stop on the B4405 road, in the car park.

A large car park adjacent to the B4405 road, surfaced with tarmac is available at this station. Parking charges apply (£2 for up to 4 hours, and £4 all day), and there are four parking spaces reserved for disabled use. The car park is operated by Brynchrug Community Council.



There are four parking spaces reserved for disabled use.

A wide pathway leads from the car park, alongside the Dolgoch Falls Hotel (which has refreshments available) to an 8ft wide metal gate, giving access to the Dolgoch Ravine, also owned by Brynchrug Community Council.



From this point, there is a choice of routes to the station.

Route 1 is to the left, up a total of 40 steps (in two sections) which vary in rise between 100mm and 200mm. There is no handrail.



At the top of the steps, a rough earth path with slate, and rock continues for 20yds. This area of the path can also be muddy. The Talylyn Railway's land is entered through a latched wicket gate. The path narrows and continues upwards on a rough path for a further 20yds to the station platform.



Route 2 is straight ahead, along a path designed for wheelchair users with a firm, level surface, which runs alongside the stream and underneath the viaduct for 150yds to the Lower Falls, rising at the end.



From here, the path turns left through either a kissing gate, or an open gateway, and then rises very steeply for 50yds.



Whilst the path is wide and has a firm surface, the steep incline is approximately 1 in 4. There is no handrail. From the top of the incline, the path turns left, and proceeds to slope gently down for 30yds, along a smooth surface. A gate, 1200mm wide, with a latch on the far side, gives access to the Tallylyn Railway's land, crossing the line on a level footbridge with ramped access into the picnic area beyond. A number of picnic tables are provided here, and the footpath continues for a further 30yds with a rough surface of earth/gravel, before sloping down to the platform.



This station is staffed during the peak season and at some quieter times. The platform surface at Dolgoch station is tarmac, and bench seats are provided on the platform and in the waiting shelter. In front of the waiting shelter is a drainage channel with a maximum depth of 30mm.



Toilets with ramped access are provided, and doorways are 750mm wide (whilst these toilets have level access they are unfortunately not suitable for wheelchairs). These are composting toilets which do not require flushing! Cold water (not suitable for drinking) is available in the washbasins, which has a press down tap in the Gents, and a turn tap in the Ladies. The platform height varies with two steps of 200mm each into a standard bogie carriage from the centre part of the platform near the

station building, and steps of 300mm and 200mm into the train at either end of the platform. A lightweight folding wheelchair ramp is available (max weight 300kg).

Abergynolwyn Station

The car park is located adjacent to the B4405 road and has a firm but rough surface of shale and gravel. Adjacent to the car park is the children's Railway Adventure Playground, with a small number of picnic tables, some of which are accessible by wheelchair, but in general the surface is rough throughout most of the playground area.



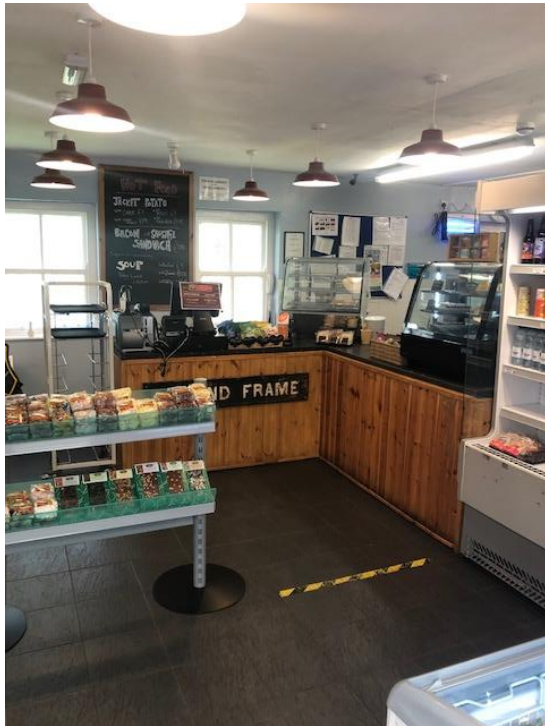
From here, a reasonably steep tarmac drive 80yds long leads up to the station.



It is possible to drive up to the station to drop visitors off, but drivers must reverse down the drive and park in the car park, as there is no parking or turning facility by the station. This station is staffed daily when trains are running.



Toilet facilities are provided, with level access into Gents, Ladies and Accessible toilets. The Accessible toilet is equipped with grab rails, a lever flush, press-down tap on the basin and a low level mirror, and there is an emergency pull cord to summon assistance.



Entry to the Quarryman's Caban café/shop is through double doors with level access. Wheelchair access is available to tables in the main part of the café which have loose seating. Large print menus are available on request. Please ask café staff if you require any assistance – they will be delighted to help. Picnic tables and plenty of bench seating is available on the platform.



The platform surface is mainly of tarmac, however the east (Nant Gwernol) end of the platform is of shale (this section of the platform is generally used only by trains to Nant Gwernol when trains are timetabled to pass each other at the station). Please also note that when trains are scheduled to pass each other using the passing loop, trains to Tywyn depart from the west (Tywyn) end of the platform, which is about 50yds from the station building. There are two steps of 200mm each into a standard bogie carriage from the platform. A lightweight folding wheelchair ramp is available (max weight 300kg). Public Transport access: Bus stop at foot of station

Nant Gwernol Station

This station has no road access but may be approached on foot from Abergynolwyn village. From the B4405 in the centre of the village, the approach is along a tarmac road for approximately 150yds (with the last 75yds being extremely steep), and then via an undulating woodland path for a further 370yds which is uneven with rock, tree roots and some surface water draining from the hillside. This station is staffed infrequently, and only when the peak train service is in operation.



The platform surface at Nant Gwernol station is mainly tarmac with slate edge stones and two steps of about 170mm and 200mm from the platform into the train. A lightweight folding wheelchair ramp is available (max weight 300kg).



There is ramped access into the platform waiting shelter which contains a long bench seat, and picnic tables are provided on the platform. Public Transport access: Bus stop in Abergynolwyn village, 420yds away.

If you would like any further information on our facilities for passengers with disabilities, or would like to talk to us about your visit, please contact us either by telephone on 01654 710472, DM on Facebook, message us from the website or by email to enquiries@talyllyn.co.uk.

